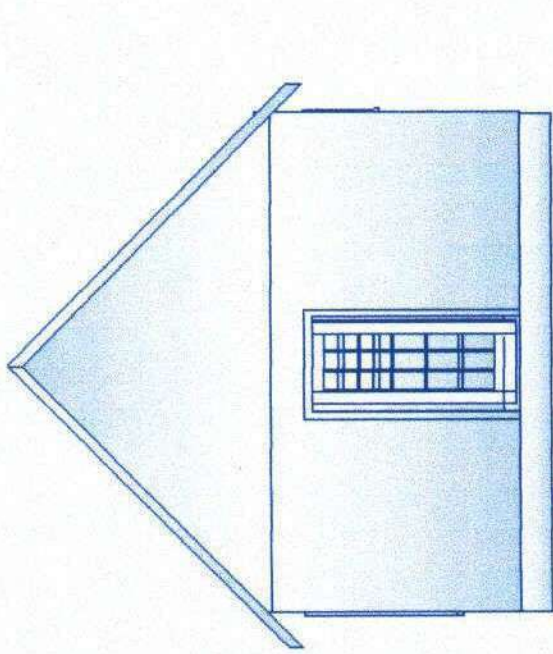
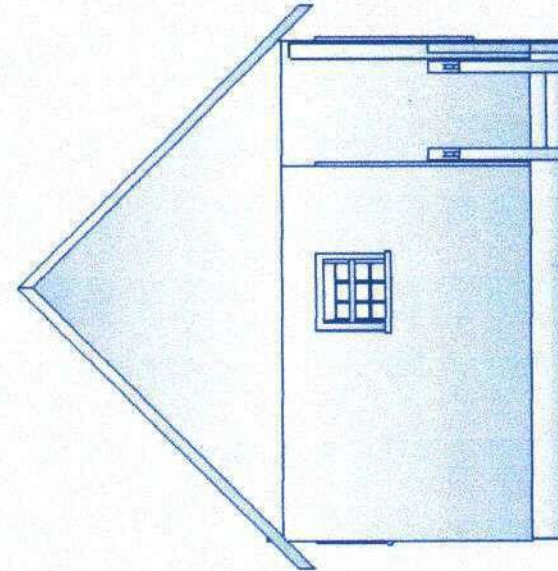


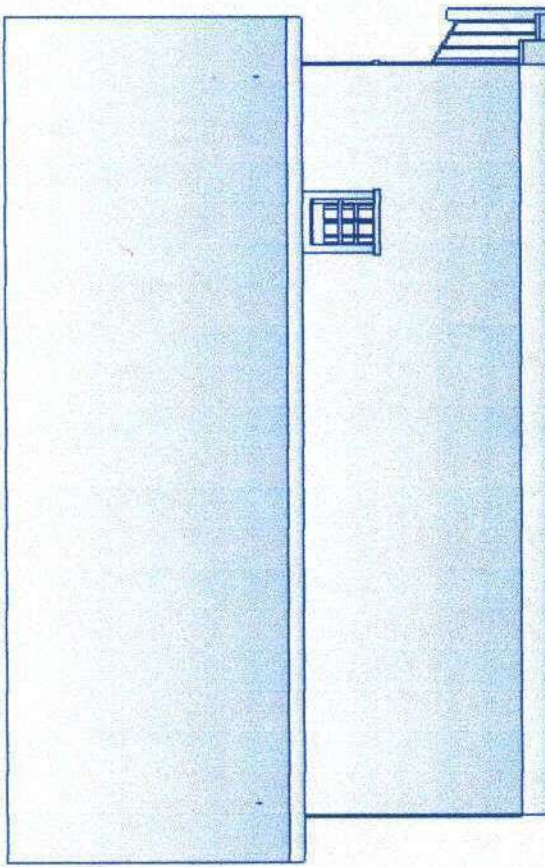
**Front Elevation**



**Right Elevation**



**Left Elevation**



**Rear Elevation**

**ELEVATIONS**

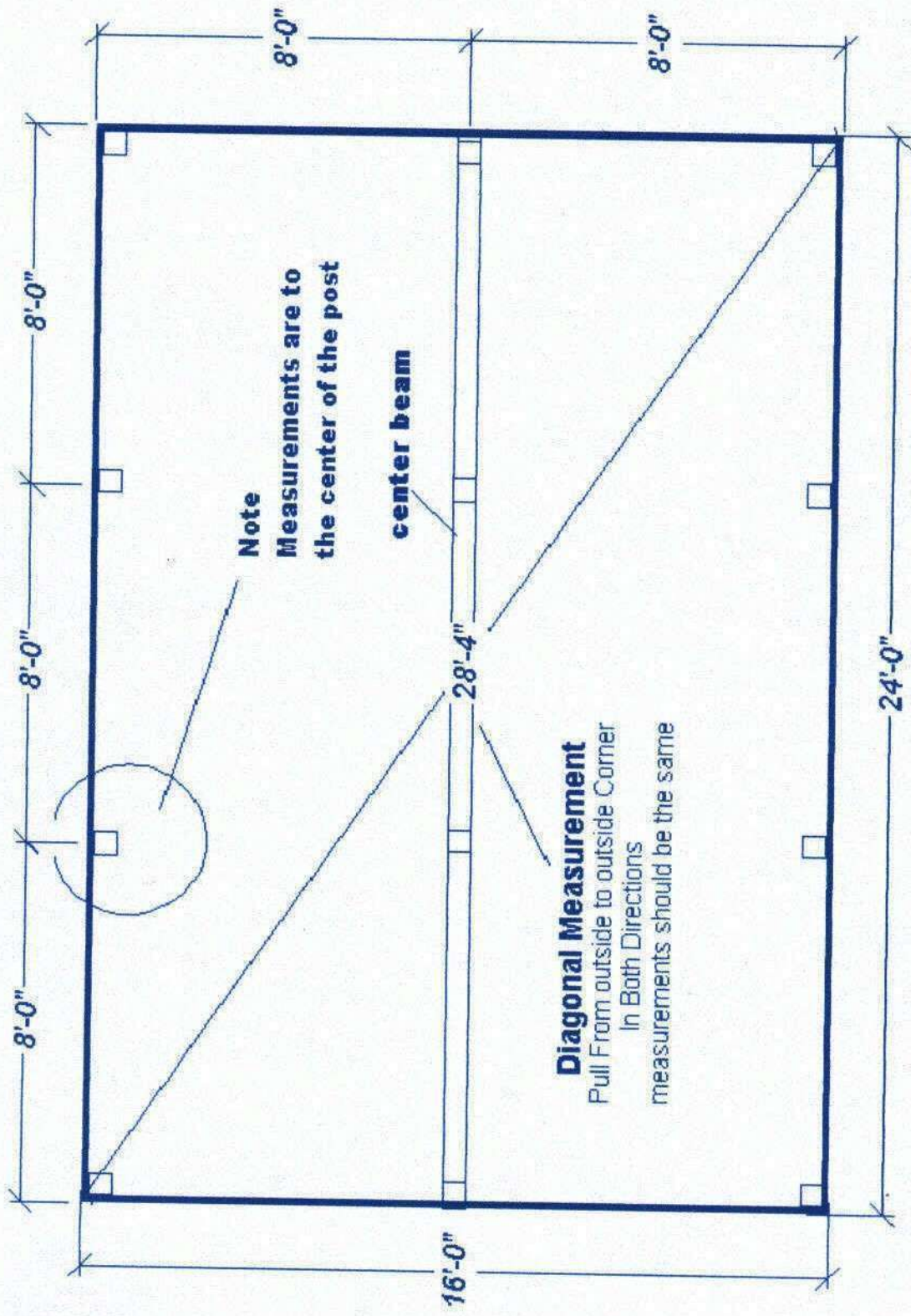
ALTERNATIVE HOUSING SOLUTIONS  
Elevations

Page 1 of 13	DATE	10/22/2003
DESIGNER Terry I. Cardwell		



Copy Righted Material  
**DO NOT COPY**

**MOUNTAIN MANSION CABIN w/LOFT**

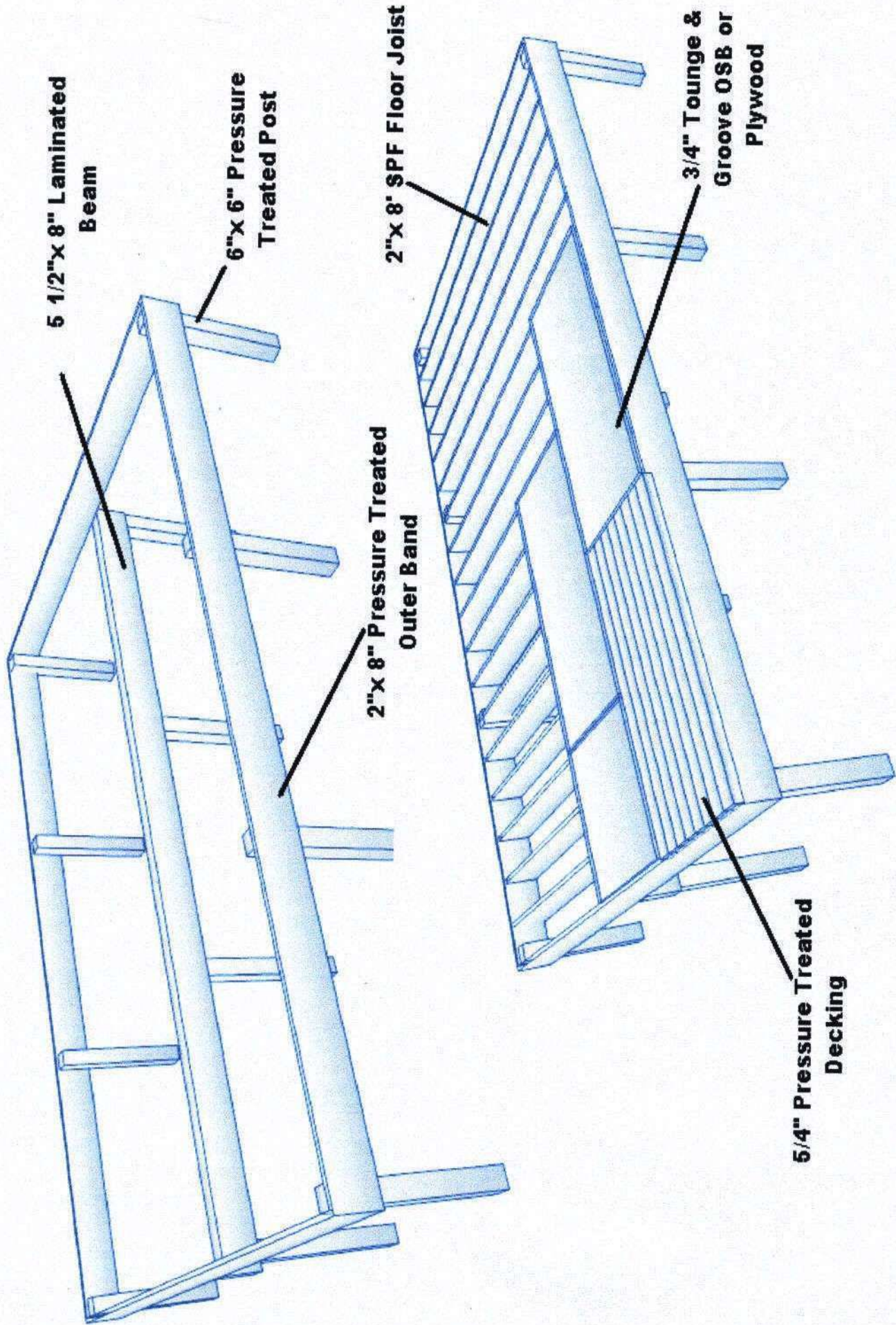


# Post & Beam Foundation Layout w/ Outer Band

<b>ALTERNATIVE HOUSING SOLUTIONS</b>	
<b>POST / BEAM / OUTER BAND LAYOUT</b>	
Page 2 of 13	DATE 10/22/2003
DESIGNER Terry L. Cardwell	

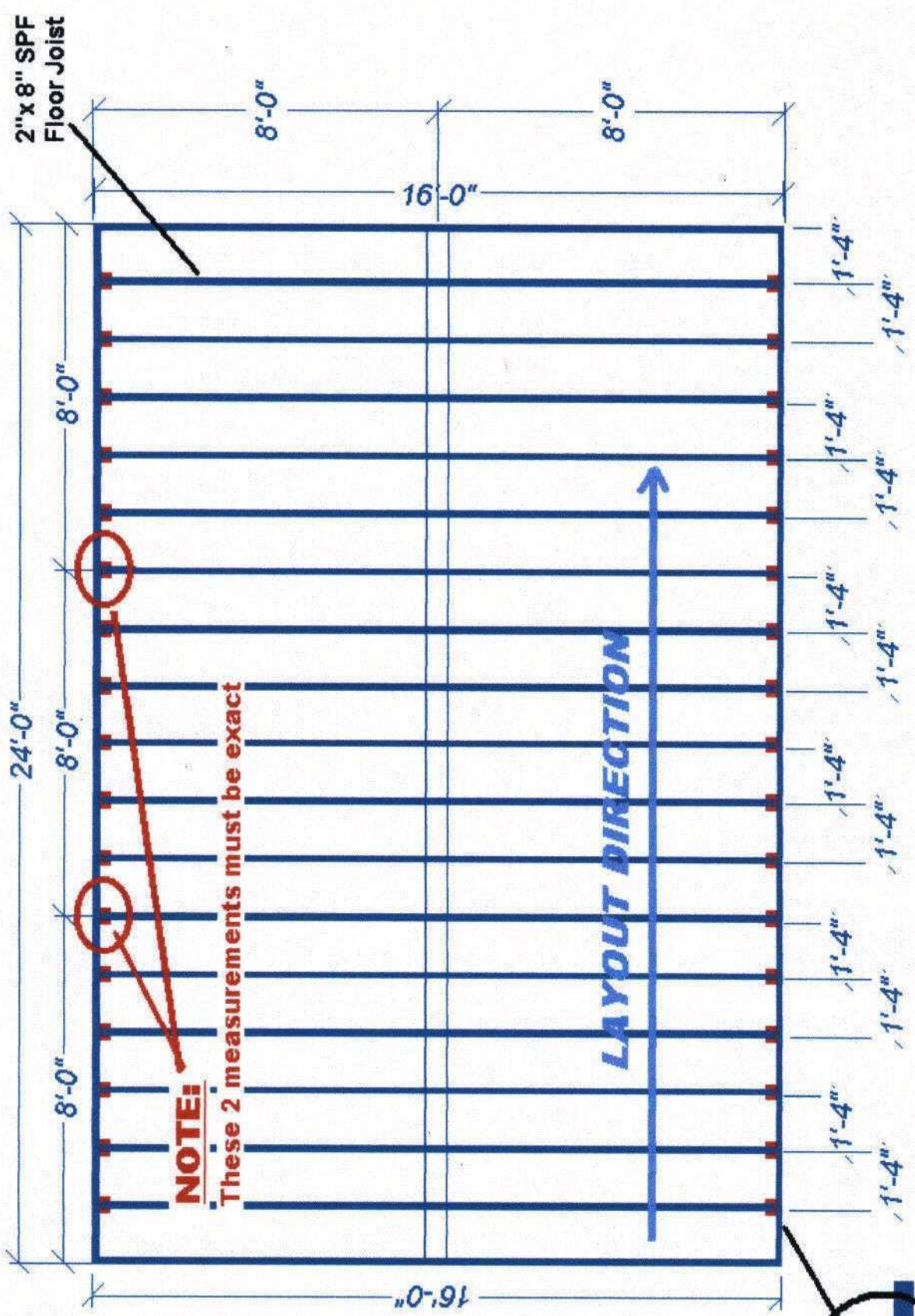


Copy Righted Material  
**DO NOT COPY**



	<b>ALTERNATIVE HOUSING SOLUTIONS</b>	
	<b>SUBFLOOR ILLUSTRATION POST &amp; BEAM</b>	
	Page 3 of 13	DATE 10/22/2003
DESIGNER, Terry L. Cardwell		

Copy Righted Material  
**DO NOT COPY**

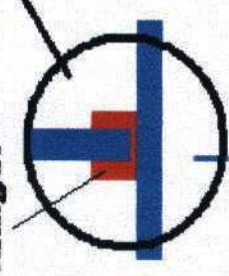


2"x8" SPF  
 Floor Joist

Joist @ 4' - 8' - 12' -  
 16' & 20' must be  
 centered to exact  
 to accept sheeting

2"x8" PT  
 Outer Band

Joist  
 Hanger

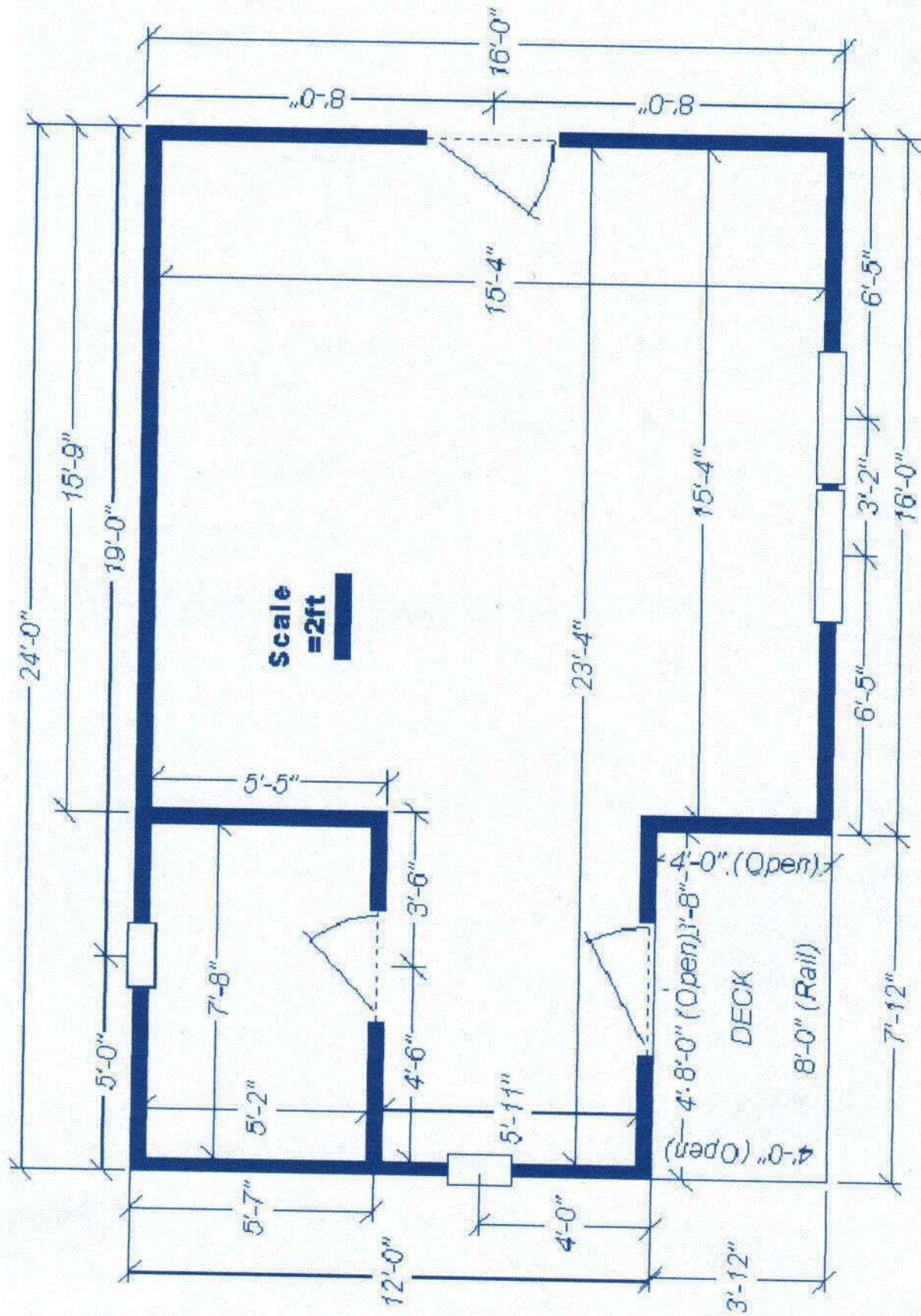


# FLOOR JOIST LAYOUT

Joist Spacing is 16" on center

<b>ALTERNATIVE HOUSING SOLUTIONS</b>	
FLOOR JOIST LAYOUT 16" O/C	
Page 4 of 13	DATE 10/22/2003
DESIGNER Terry L. Cardwell	

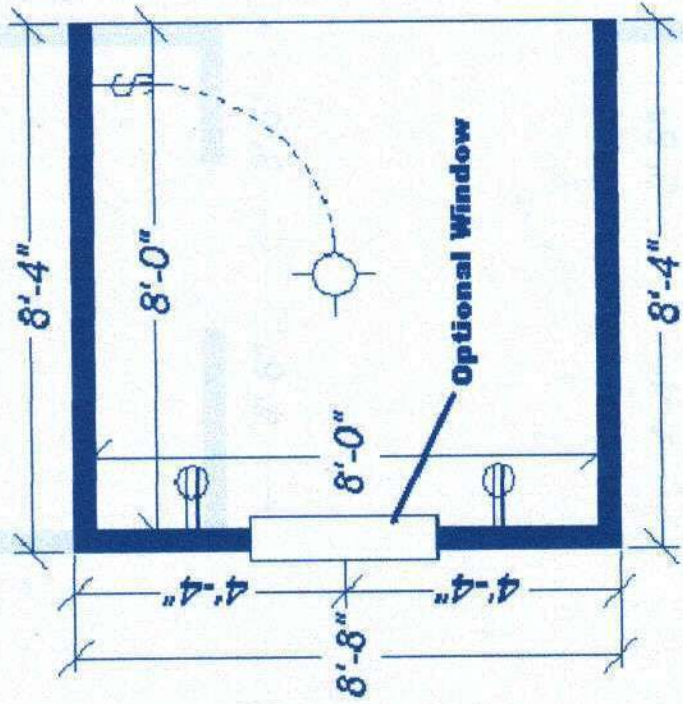
Copy Righted Material  
**DO NOT COPY**



# Floor Plan Walls / Windows / Doors

	<b>ALTERNATIVE HOUSING SOLUTIONS</b>	
	Wall / Window / Door Layout	
	Page 5 of 13	DATE 10/22/2003
DESIGNER Terry L Cardwell		

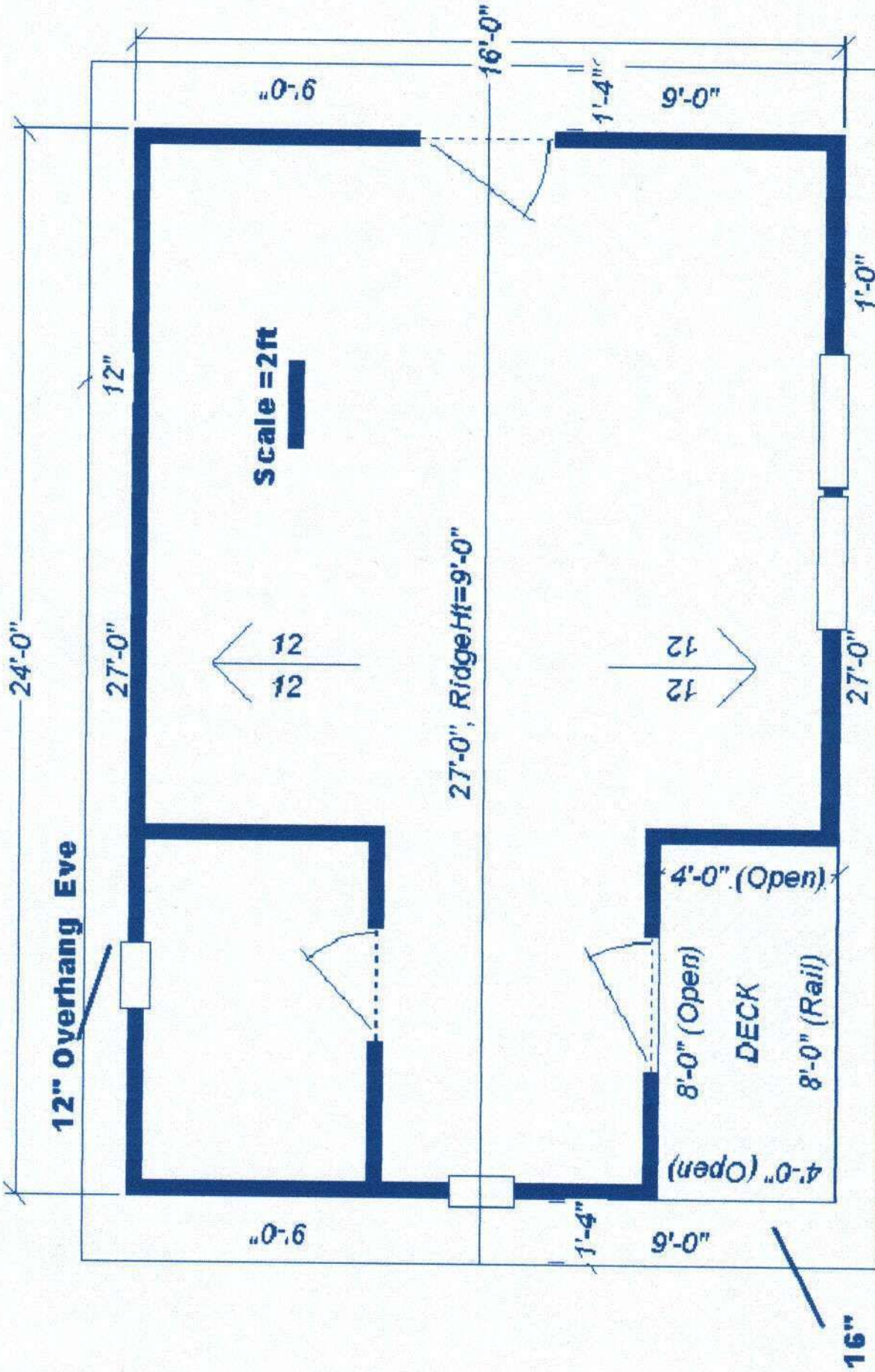
Copy Righted Material  
**DO NOT COPY**



# LOFT FLOOR PLAN & ELECTRICAL

	ALTERNATIVE HOUSING SOLUTIONS	
	LOFT LAYOUT & ELECTRICAL	
Page 6 of 13	DATE	10/22/2003
DESIGNER Terry L Cardwell		

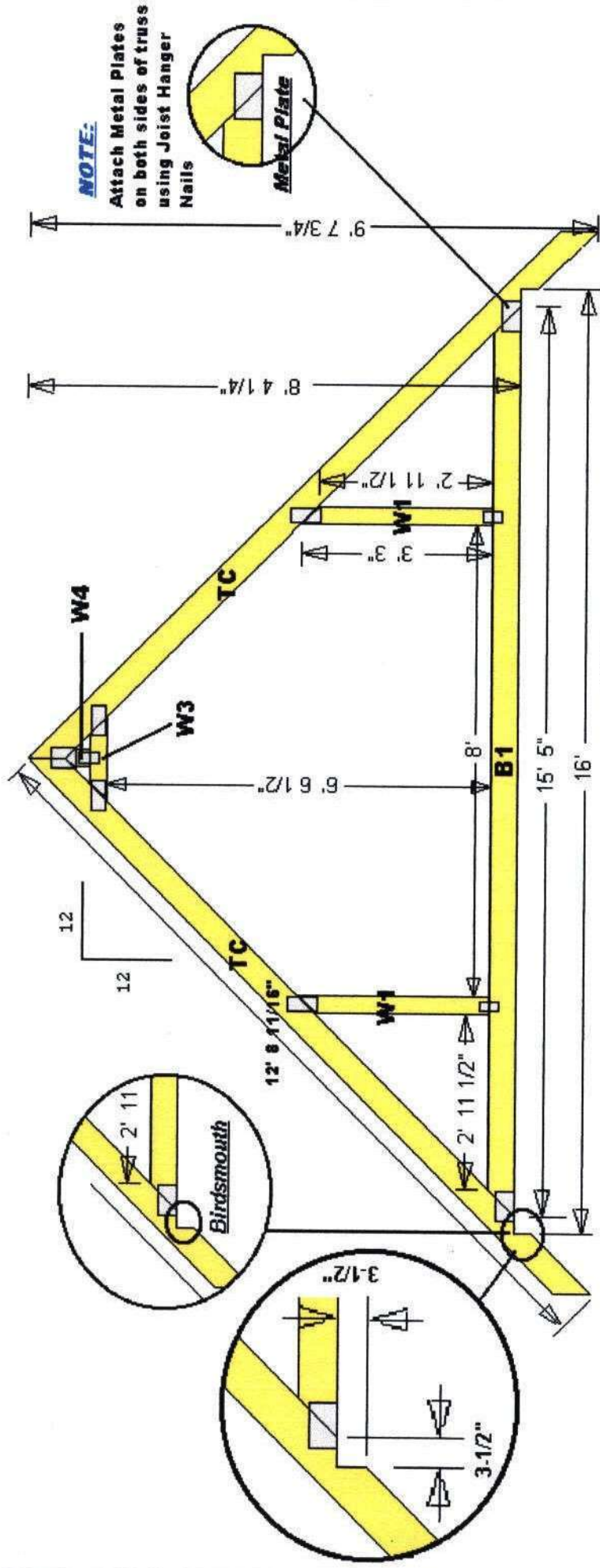
Copy Righted Material  
**DO NOT COPY**  
 MOUNTAIN MANSION CABIN w/LOFT



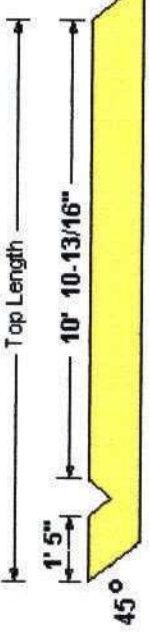
**Roof Layout 12/12 Pitch 12" OH Eave**

<b>ALTERNATIVE HOUSING SOLUTIONS</b>	
Roof Layout 12/12 Pitch 12" OH Eave	
Page 7 of 13	DATE 10/22/2003
DESIGNER Terry L Cardwell	





**Top Chords Perimeter**



Qty	Size	Name	Bot Len	Top Len	O/A Len
12	2x6	TC	12' 8-3/4"	12' 8-3/4"	13' 2-1/4"

**Bottom Chords**



Qty	Size	Name	Bot Len	Top Len	O/A Len
6	2x6	B1	15' 5"	14' 11-1/4"	15' 5"

**Webs**



Qty	Size	Name	Bot Len	Top Len	O/A Len
12	2x4	W1	3' 3"	3' 1-1/4"	3' 3"



Qty	Size	Name	Bot Len	Top Len	O/A Len
6	2x4	W4	3' 4"	5"	5"



Qty	Size	Name	Bot Len	Top Len	O/A Len
6	2x4	W3	1' 5"	1' 1-1/8"	1' 5"

**Attic Truss & Material Cut List**

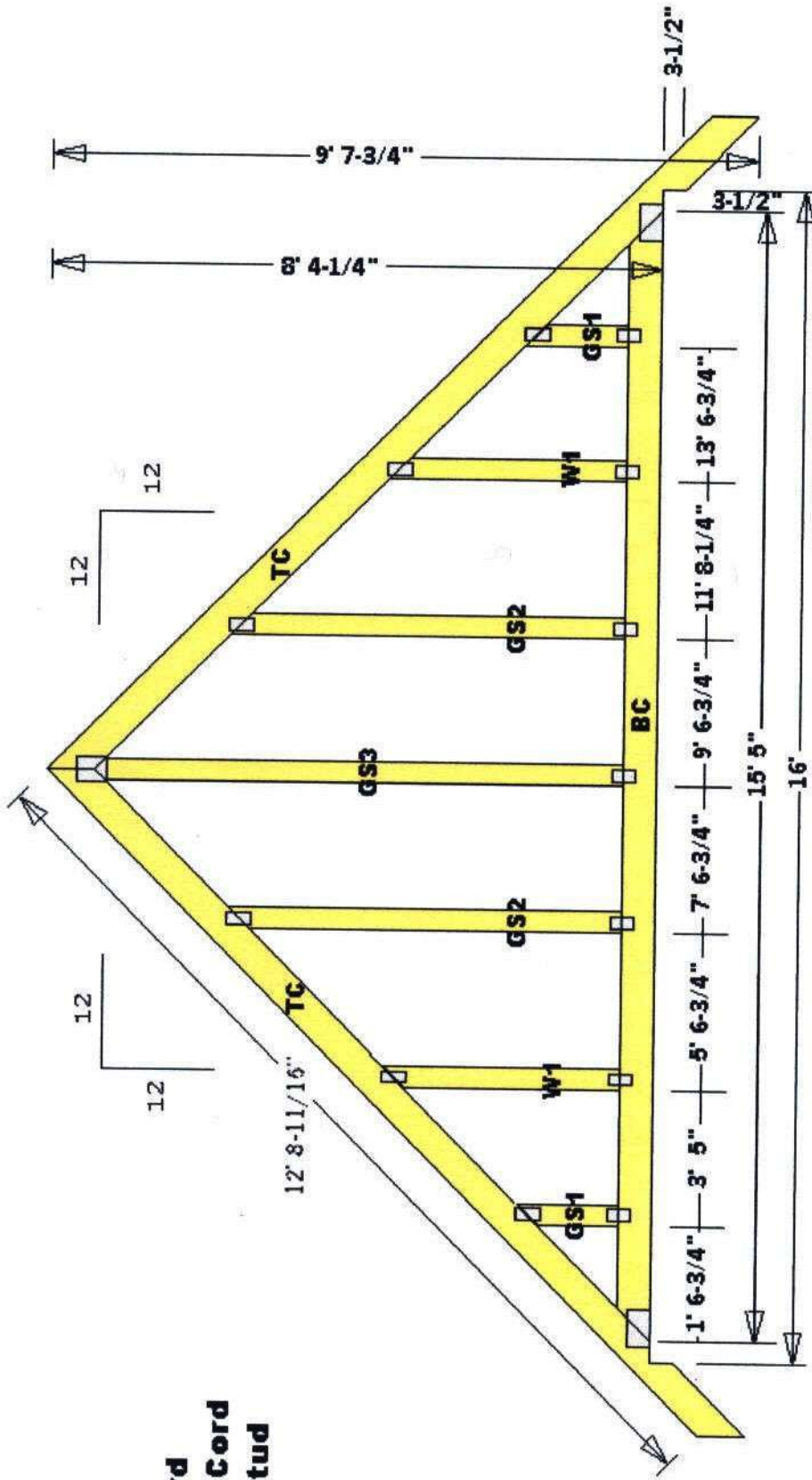
	<b>ALTERNATIVE HOUSING SOLUTIONS</b>	
	<b>ATTIC TRUSS &amp; MATERIAL CUT LIST</b>	
	Page 8 of 13	DATE 10/22/2003
	DESIGNER: Terry L Cardwell	

Copy Righted Material  
**DO NOT COPY**

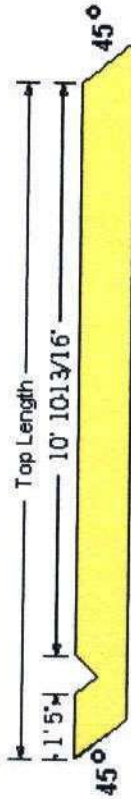
**MOUNTAIN MANSION CABIN W/LOFT**

**LEGEND**

- TC** Top Cord
- BC** Bottom Cord
- GS** Gable Stud
- W** Web

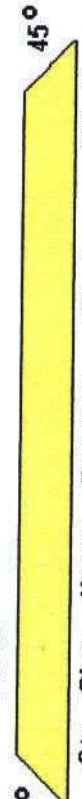


**Top Chords Perimeter**



Qty	Size	Name	Bot Len	Cent Len	O/A Len
4	2x6	TC	12' 8-3/4"	12' 8-3/4"	13' 2-1/4"

**Bottom Chords**



Qty	Size	Name	Bot Len	Cent Len	O/A Len
2	2x6	B1	15' 5"	14' 11-1/4"	15' 5"

**Webs**

Qty	Size	Name	Bot Len	Cent Len	O/A Len
4	2x4	W1	3' 3"	3' 1-1/4"	3' 3"

**Gable Studs**

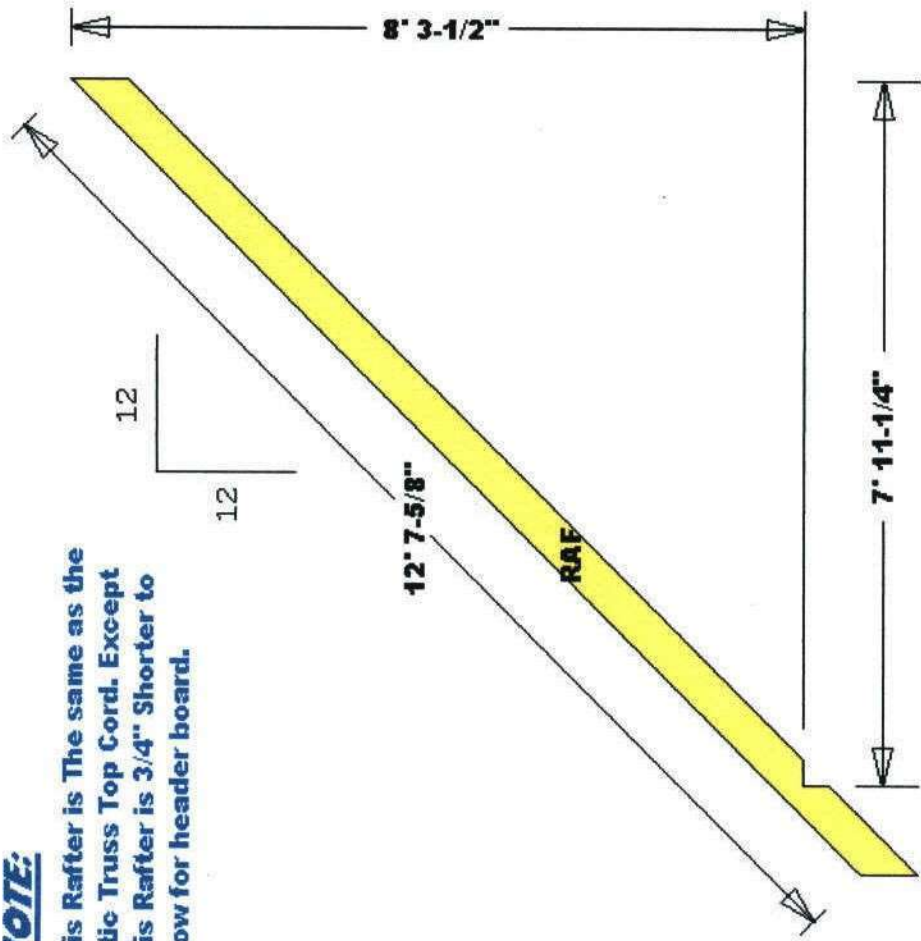
Qty	Size	Name	Bot Len	Cent Len	O/A Len
2	2x4	GS3	7' 1-1/4"	7' 3"	7' 3"
4	2x4	GS2	5' 4-3/4"	5' 3"	5' 4-3/4"
4	2x4	GS1	1' 4-3/4"	1' 3"	1' 4-3/4"

**ALTERNATIVE HOUSING SOLUTIONS**  
 GABLE & MATERIAL CUT LIST  
 Page 9 of 13 DATE 10/22/2003  
 DESIGNER Terry L. Cardwell

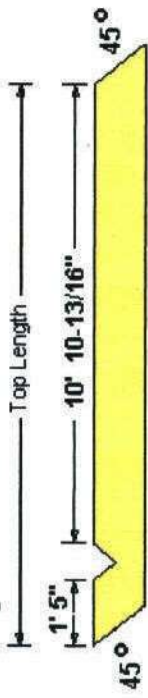
Copy Righted Material  
**DO NOT COPY**

**NOTE:**

This Rafter is The same as the Attic Truss Top Cord. Except This Rafter is 3/4" Shorter to allow for header board.



*Top Chord's Perimeter*



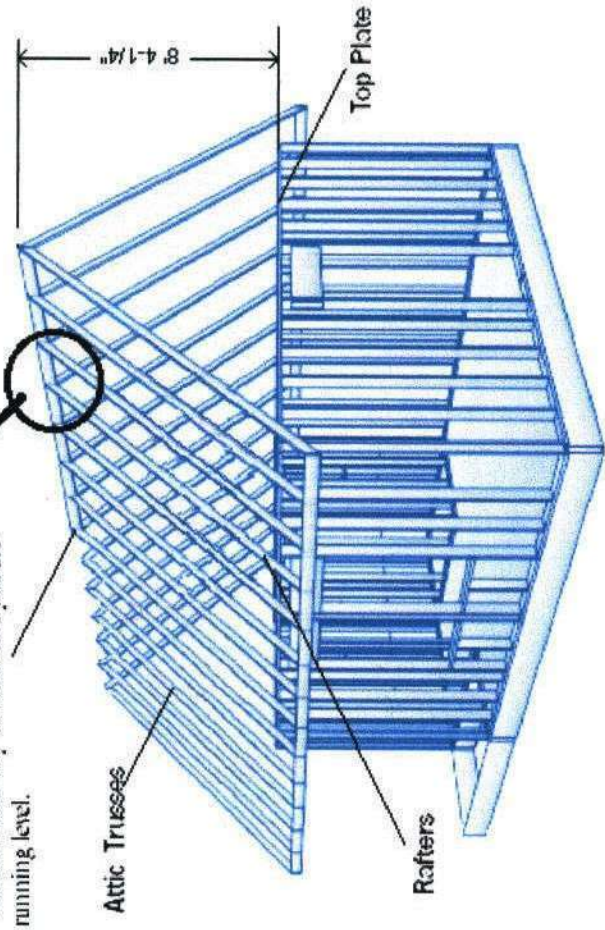
Qty	Size	Name	Bot Len	Top Len	O/A Len
22	2x6	RAF	12'-7-11/16"	12'-7-11/16"	13'-1-3/16"

**2"x 6" Ridge Board**  
Top of this Ridge Board must be 8' 4-1/4" from the top of the wall plate



**Install and brace Ridge Board 1st**  
(see manual for directions)

The Ridge Board butts into the first Attic Truss. This is another way to make sure you are running level.



TYPICAL LAYOUT OF ROOF COMPONENTS

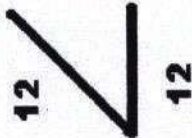
**Rafter & Rafter Cut Sheet**

	ALTERNATIVE HOUSING SOLUTIONS	
	RAFTER & RAFTER CUT SHEET	
	Page 10 of 13	DATE 10/22/2003
DESIGNER Terry L Cardwell		

Copy Righted Material  
**DO NOT COPY**

12" Eave Overhang

16" Gable Overhang

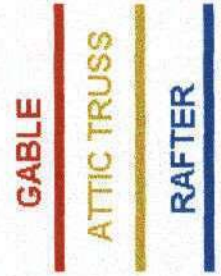
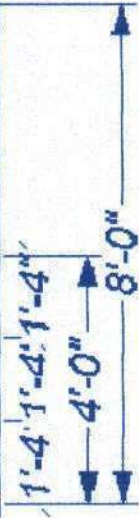


2" x 6" RIDGE BOARD

LAYOUT DIRECTION

12

12



# TRUSS / RAFTER LAYOUT

Spacing is 16" on center  
12 / 12 Pitch








<b>ALTERNATIVE HOUSING SOLUTIONS</b>	
ROOF TRUSS / RAFTER LAYOUT	16" o/c
Page 11 of 13	DATE 10/22/2003
DESIGNER Terry L. Cardwell	

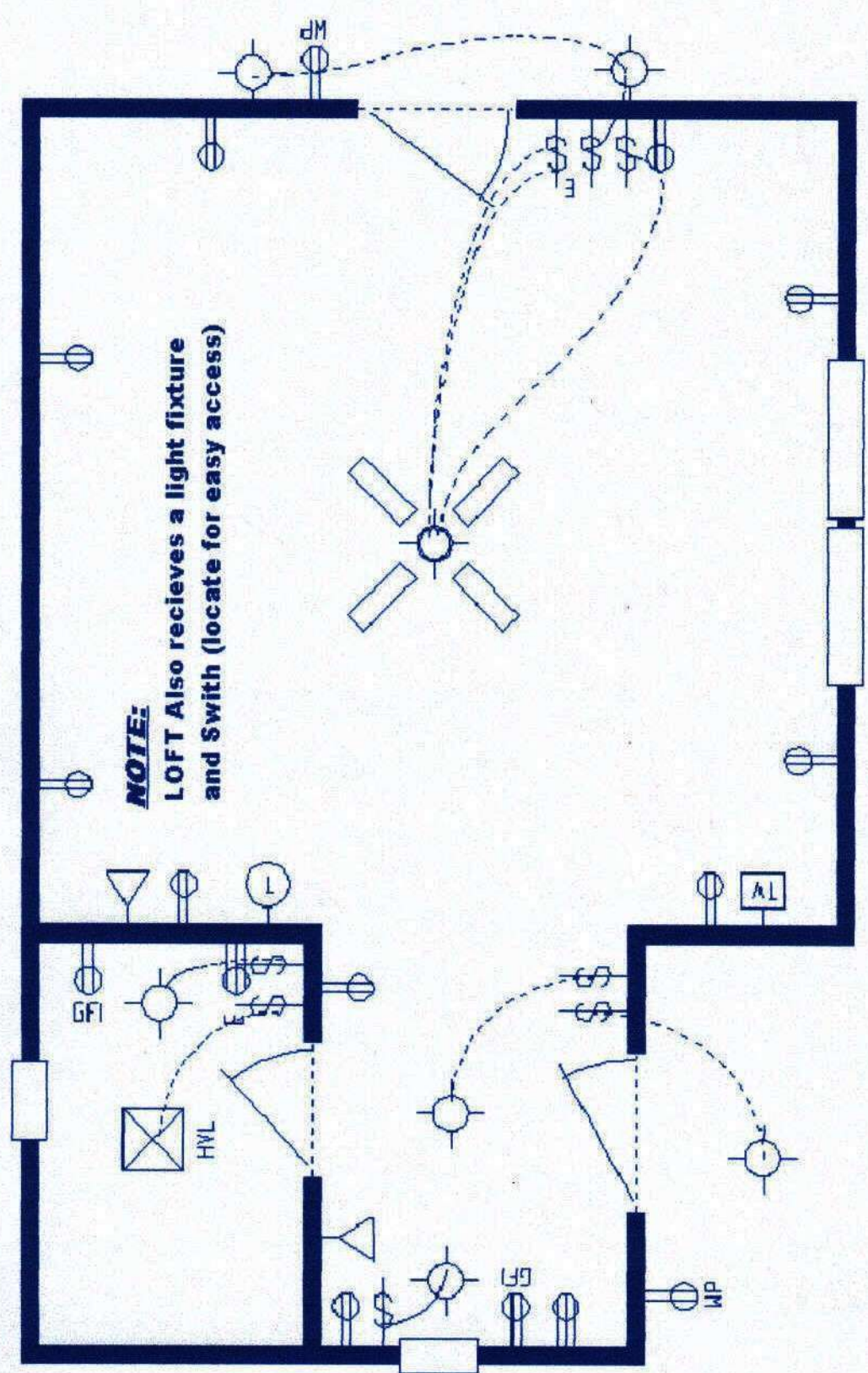


Copy Righted Material  
**DO NOT COPY**

**MOUNTAIN MANSION CABIN w/LOFT**

**LEGEND**

- Heat Vent Light 
- HVL 
- 110 Receptacle 
- Ground Fault 
- 220 receptacle 
- Waterproof Rec 
- Light Switch 
- 3-Way 
- Light Fixture 
- Phone Jack 
- Smoke Detector 
- Cable 



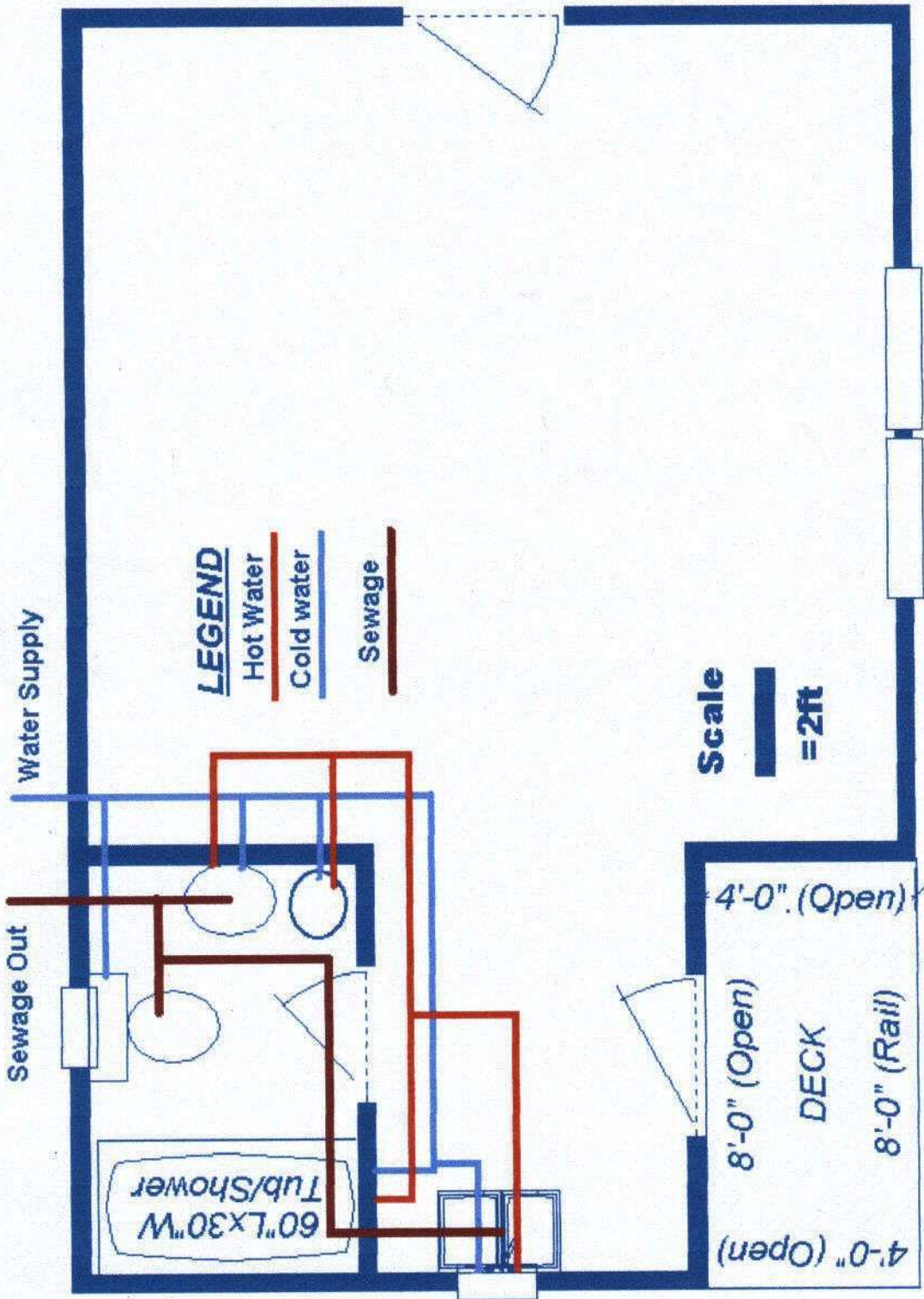
**NOTE:**  
LOFT Also receives a light fixture and Switch (locate for easy access)

**Scale**  
=2ft

# Electrical Layout & Legend

	<b>ALTERNATIVE HOUSING SOLUTIONS</b>	
	<b>ELECTRICAL LAYOUT &amp; LEGEND</b>	
	Page 12 of 13	DATE 10/22/2003
DESIGNER Terry L. Gardwell		

Copy Righted Material  
**DO NOT COPY**



# PLUMBING & FIXTURES LAYOUT

<b>ALTERNATIVE HOUSING SOLUTIONS</b>	
Plumbing & Fixtures Layout	
Page 13 of 13	DATE 10/22/2003
DESIGNER Terry L. Gardwell	

